

While we wait for the meeting to start, enjoy the sounds of
Shared Print, by Beckoning Cat



This music derived from the distribution of Library of Congress class numbers across the collective collection as registered in OCLC.

More music from Dapper Kitty Music is available at <https://www.youtube.com/channel/UCie37vwYXtVYG5-B8ypjxxQ/featured>



PARTNERSHIP FOR
SHARED BOOK COLLECTIONS



ROSEMONT
SHARED PRINT ALLIANCE

Partnership for Shared Book Collections/Rosemont Shared Print Alliance

Joint Member Meeting

The Shared Print Future is Open and Big

February 8, 2022

9-12 PT / 10-1 MT / 11-2 CT / 12-3 ET



PARTNERSHIP FOR
SHARED BOOK COLLECTIONS



ROSEMONT
SHARED PRINT ALLIANCE

Code of Conduct

The Partnership for Shared Book Collections and the Rosemont Shared Print Alliance seek to provide a welcoming, professionally engaging, fun, and safe meeting experience for everyone. We do not tolerate harassment in any form. All those participating in Member Meeting are asked to:

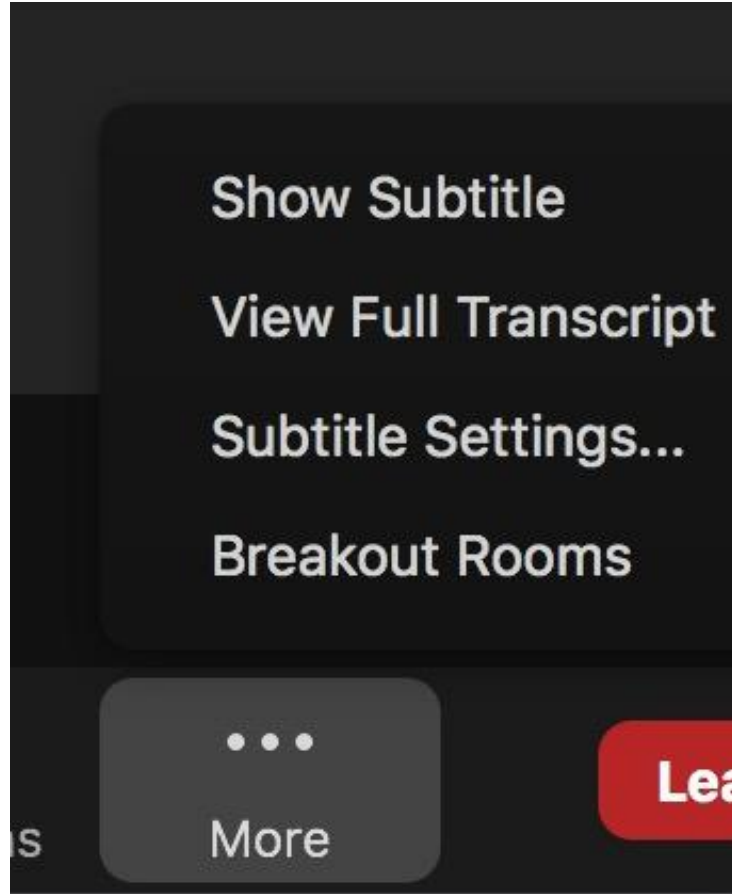
- Use welcoming and inclusive language
- Listen as much as one speaks
- Gracefully give and accept constructive criticism
- Be respectful of differing viewpoints and experiences
- Yield the floor to those whose viewpoints and experiences may be underrepresented

If you have been involved in or witnessed an incident that may violate this Code of Conduct, please contact info@sharedprint.org or any host through the meeting chat.



Housekeeping

How to turn on Captions / Subtitles



Housekeeping

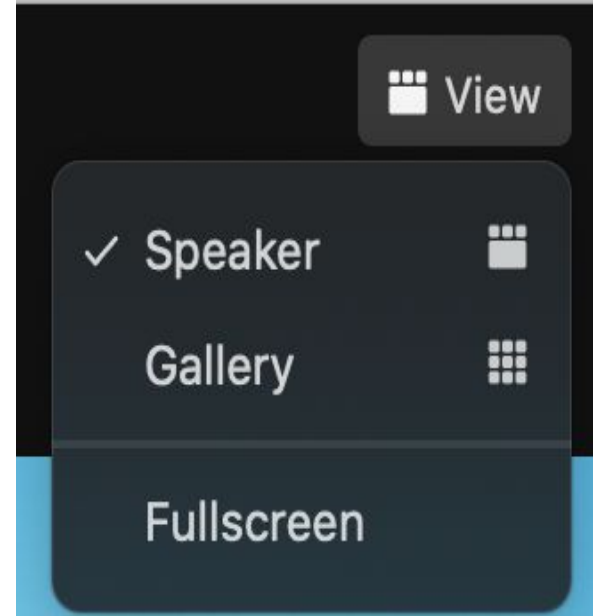
Please keep yourself muted!

Use Speaker View

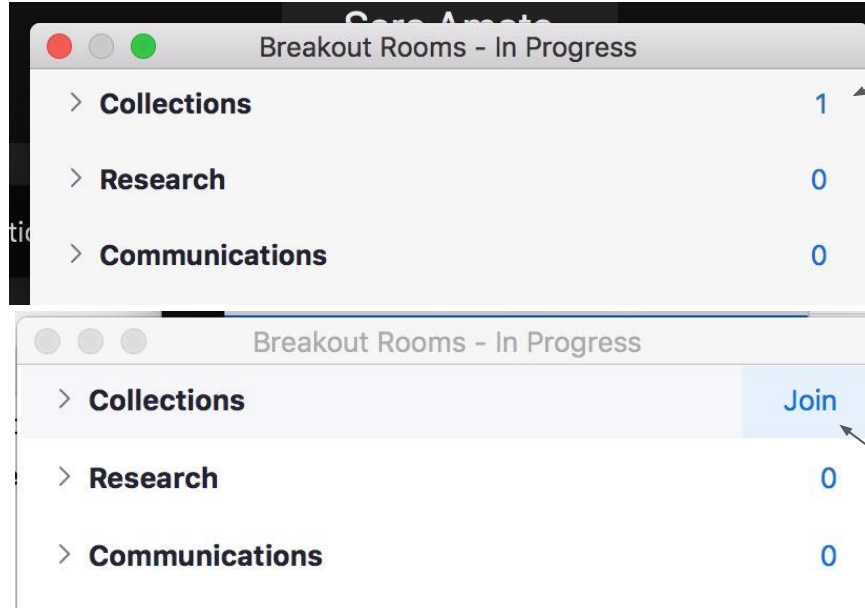
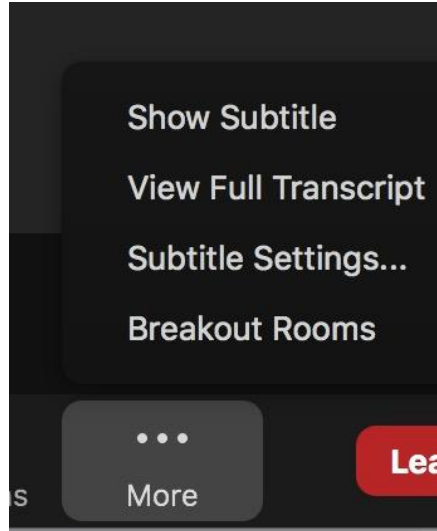
Questions in Chat to Everyone

Group Notes:

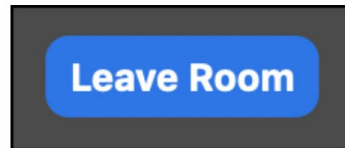
<https://bit.ly/PSBC2022MemberMeeting>



Housekeeping - Joining a Breakout Room, Changing Rooms



Hover over the number to get the [Join] button



You can leave a room and join another room



Agenda



Welcome and Setting the Stage - Susan Stearns (EAST) (10 minutes)

Program Updates from The Partnership and The Rosemont Alliance (30 minutes)

Rosemont - Michael Levine-Clark, University of Denver, Chair of the Exec Committee

Partnership - Daniel Dollar, Yale University, Chair of the Exec Committee

Panel on “Open Doors / Open Infrastructure / Open Data / Open Access” (45 minutes)

Moderated by Greg Eow (Center for Research Libraries)

Panelists: Teri Galloway, Executive Director, Statewide California Electronic Library Consortium (SCELC)

Kirsten Leonard Executive Director, Private Academic Library Network of Indiana (PALNI)

Ian Bogus Executive Director, Research Collections and Preservation Consortium (ReCAP)

Break (10 minutes)

Breakouts Sessions (30 minutes)

Controlled Digital Lending - Charlie Barlow, Executive Director, Boston Library Consortium

Platform for Open Discovery - Tom Cramer, Associate University Librarian, Library Technology, Stanford University

Linked Data - Nancy Lorimer, Head, Metadata Department, Stanford Libraries, Stanford University

Collaborative Collections Lifecycle Platform - Boaz Nadav-Manes, University Librarian, Lehigh University

Rosemont/Partnership future relationship - Chairs of Ops/Exec of Partnership/Rosemont

Open Topics - Aaron Krebeck, Director of Library & User Services, Washington Research Library Consortium (WRLC)

Reporting back from breakouts and Q & A (30 minutes)

Wrap-up/Conclusions - Exec Committee Chairs (5 minutes)

Welcome - Susan Stearns, Project Director,
Eastern Academic Scholars' Trust



Shared Print Today

Building bigger and better together

Creating and using collective collections at scale

Advocacy with service providers to integrate shared print into local library workflows and discovery

Hundreds of libraries retaining millions of book and journal titles made accessible for study, teaching, research and scholarship



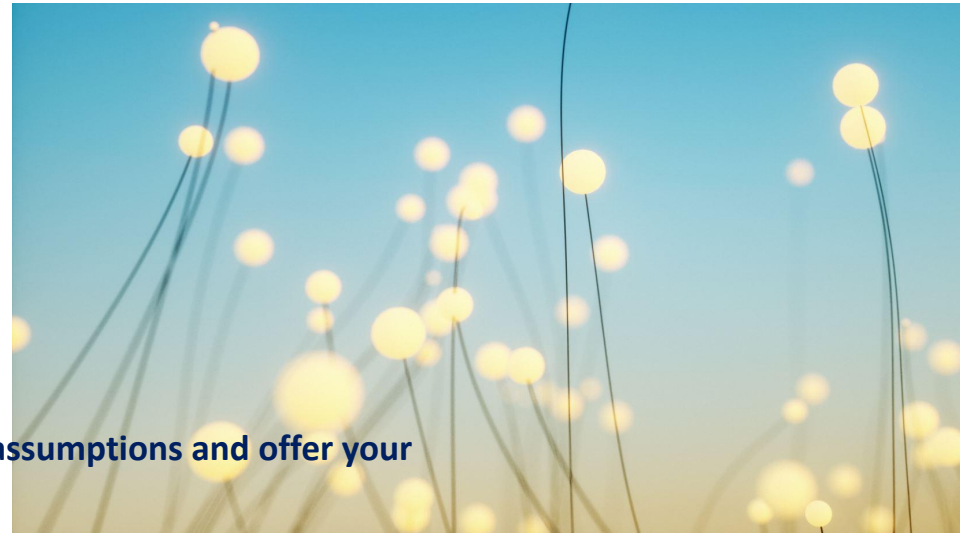
Shared Print Tomorrow

Open data with innovative and interoperable tools

More fully embedded in the collection lifecycle

Broader, deeper and more inclusive participation by the diversity of academic and research libraries – and beyond

Please ask questions, express skepticism, challenge our assumptions and offer your ideas!



The Joint Meeting Planning Committee

Daniel Dollar, Associate University Librarian for Scholarly Resources Yale University

Chair of the Partnership Exec Committee

Michael Levine-Clark, Dean, University Libraries, University of Denver

Chair of the Rosemont Alliance Executive Committee

Stephen Connaghan, University Librarian, Catholic University of America

Past Chair of the Rosemont Alliance Executive Committee

Pam Jones, Executive Director, ConnectNY

Chair of the Partnership Operations Committee

Ben Walker, Associate Dean, Discovery, Digital Services and Shared Collections

Chair of the Rosemont Operations Committee

Susan Stearns, Project Director, Eastern Academic Scholars' Trust (EAST)

Past Chair of the Rosemont Operations Committee, Member of the Partnership Executive Committee

Alison Wohlers, UC/ Western Regional Storage Trust (WEST) Shared Print Program Manager

Member of both the Partnership & Rosemont Alliance Operations Committees

John Burger, Executive Director, Association of Southeastern Research Libraries (ASERL),

Chair of the Joint Partnership/Rosemont Alliance Communications and Advocacy Working Group

Rebecca Lubas, Dean of Libraries, Central Washington University,

Member of the Joint Partnership/Rosemont Alliance Communications and Advocacy Working Group

Sara Amato, Program Coordinator, Partnership for Shared Book Collections



An Update on the Rosemont Alliance for Shared Print - Michael Levine-Clark, University of Denver



Why do we need shared print programs for journals?



Big Ten Academic
Alliance Shared
Print Repository
(CICBTAA-SPR)



Center for Research
Libraries (CRL)



Eastern Academic
Scholars' Trust
(EAST)



Florida Academic
Libraries Repository
(FLARE)

FLorida
Academic
REpository

Scholars Trust



Western Regional
Storage Trust
(WEST)



In 2015-2016, four shared print journal programs (BTAA, FLARE, Scholars Trust, WEST) agreed:

- To ensure a common *vision*: To ensure the preservation and availability of print journal literature
- To adopt a common *mission*: To collaboratively develop, manage, and coordinate the identification, retention, registration, discovery of and access to a shared, distributed collection of print journals in the US
- To periodically define and collectively agree upon *strategic directions* to accomplish the vision and mission
 - Collection growth
 - Shared policies and guidelines
 - Engagement with other programs and service providers

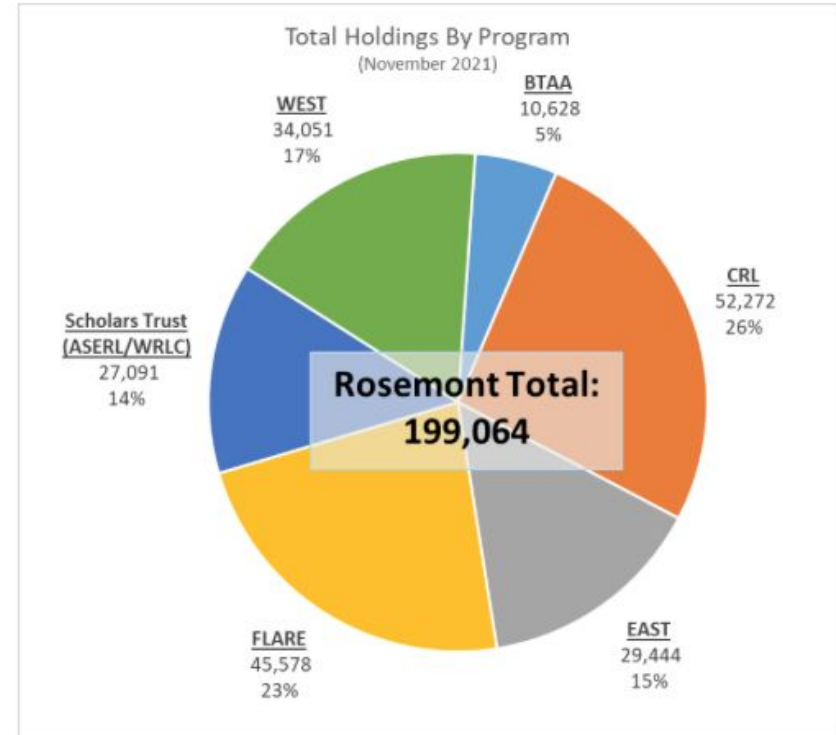


Rosemont numbers: December 2021

199,064 total titles

126,913 unique titles

2015 Goal: 100,000 new titles by 2021



Current Rosemont Initiatives

Last Known Copies Initiative

- 61,538 titles with only one copy
- 39 libraries conducting pilot to review, consider retention commitments

Gap Filling Initiative

- Reviewed practices of the programs
- Developing documentation
- Considering a pilot

Registration in WorldCat

Access Working Group

- Assessing resource sharing
- Identifying best practices for gathering statistics from ILL tools

Storage Partners

- Investigating role of Rosemont in coordinating use of storage facilities

Collaboration with the Partnership for Shared Book Collections

- Reduce duplication of efforts



Rosemont Strategic Directions 2022-2024

Collection Growth and Security: Establish milestones for collection growth and retention, including adding new titles and more copies to the collective collection

Shared Policies or Guidelines: Align operational policies for registration of retention commitments, preservation actions, discovery of, and access to shared print journal collections

Advocacy & Engagement with Other Programs: Explore potential partnerships with other organizations and programs in the U.S. and Canada, as well further our close collaboration with the Partnership for Shared Book Collections

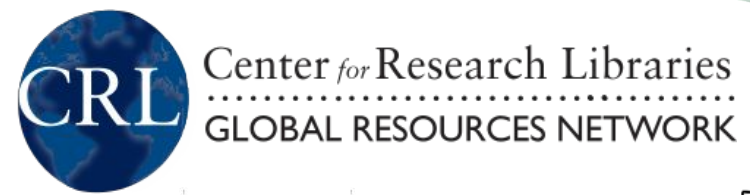
Infrastructure: Work with partners across the shared print landscape to support the ongoing development of important infrastructure tools that assist in decision-making for our programs and their participating libraries.

DEI: A commitment to make diversity, equity, and inclusion more prominent in our initiatives and decision making



An Update on the Partnership for Shared Book Collections - Daniel Dollar, Yale University

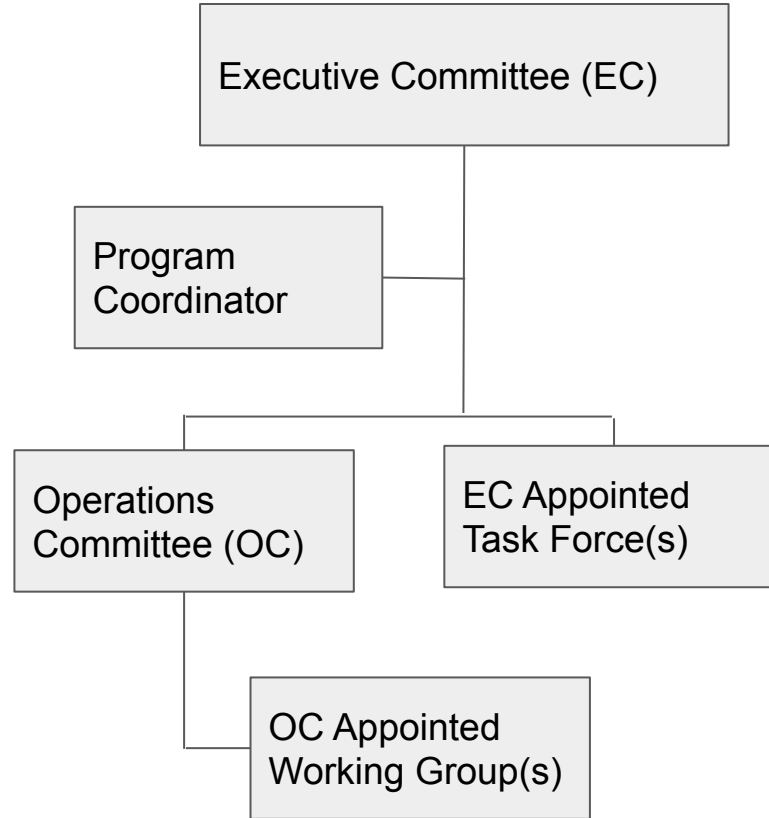




Council of Prairie and Pacific University Libraries



Partnership Governance



CCH Summit - Partnership Expressions of Action

1. Work with Rosemont to convene the appropriate players within shared print including service providers, shared print programs, and library practitioners to discuss the development of more robust and flexible matching algorithms.
2. Advocate with service providers (and educate when necessary) on how the current MARC 583 standard can be used TODAY by both service providers and practitioners within existing workflows to further integration of shared print across the lifecycle of collection management.
3. Highlight shared print as a part of the collection lifecycle, with an emphasis on shared print as part of the collective collection.
4. Investigate opportunities for the Partnership Infrastructure Working Group to support and align with the CCH Collab work.
5. Pursue the Research Agenda the Partnership began developing in 2020 and consider how best to address DEI considerations.



Activities and Initiatives

Advancing the Partnership's Research Agenda

<https://sharedprint.org/about/research-agenda/>

Working with OCLC Research on pilot project on corpus of shared print

Official signatory of the [Statement on Using Controlled Digital Lending as a Mechanism for Interlibrary Loan](#)

Convened task forces on:

- Membership
- Defining “Scarce and Unique Materials”

Plans to convene task forces on “Shared Print Statistical Data” and “Multipart Monographs and Monographic Series”



Working Groups

Best Practices

Best Practices for Facsimiles and Shared Print Education and Awareness.

Infrastructure

Working Group's 2021 report is now available, working with CCH on shared goal of keeping track of Shared Print functionality across service providers.

Research & Network Level

Cost and Value of Shared Print Task Force, Shared Print Toolkit Task Force, Risk Task Force, Resource Sharing Research Task Force

Communications & Advocacy (Joint group with the Rosemont Alliance)

Infographic for Shared Print

Continued messaging around Shared Print and Resource Sharing,
Beginning an FAQ on how to talk about weeding



Program Updates Q & A



Note: there will also be a breakout room on the future relationship between
The Partnership and the Rosemont Alliance



Panel:

Open Doors / Open Infrastructure / Open Data / Open Access

Moderated by Greg Eow (President, Center for Research Libraries (CRL) & Rosemont Shared Print Alliance Executive Committee)

Panelists: Teri Galloway, Executive Director, Statewide California Electronic Library Consortium (SCELC)

Kirsten Leonard Executive Director, Private Academic Library Network of Indiana (PALNI)

Ian Bogus Executive Director, Research Collections and Preservation Consortium (ReCAP)



Greg Eow



Teri Galloway



Kirsten Leonard



Ian Bogus





Teri Gallaway

Executive Director, Statewide California Electronic
Library Consortium (SCELC)



scelc



Shared Print-Open Doors

Teri Oaks Gallaway, PhD
Executive Director, SCELC

Program Drivers

MISSION

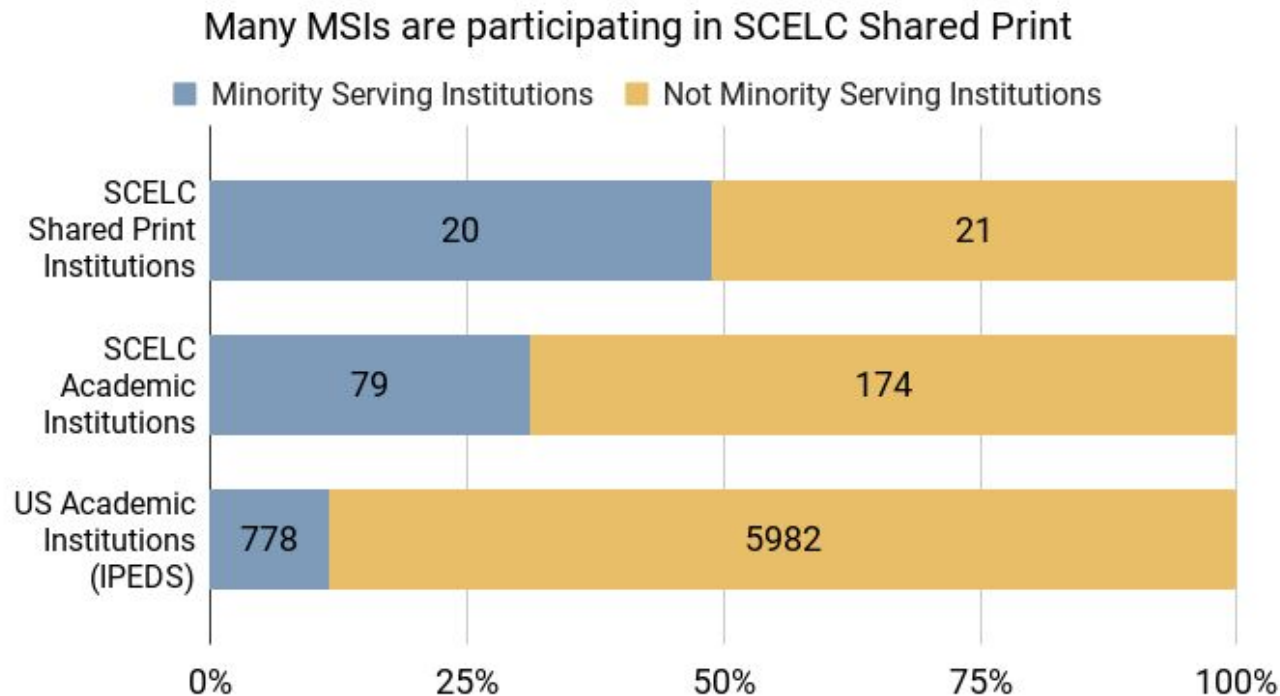
DEI Values
in Services

PRESERVATION

Collection
Diversity in
Shared Print

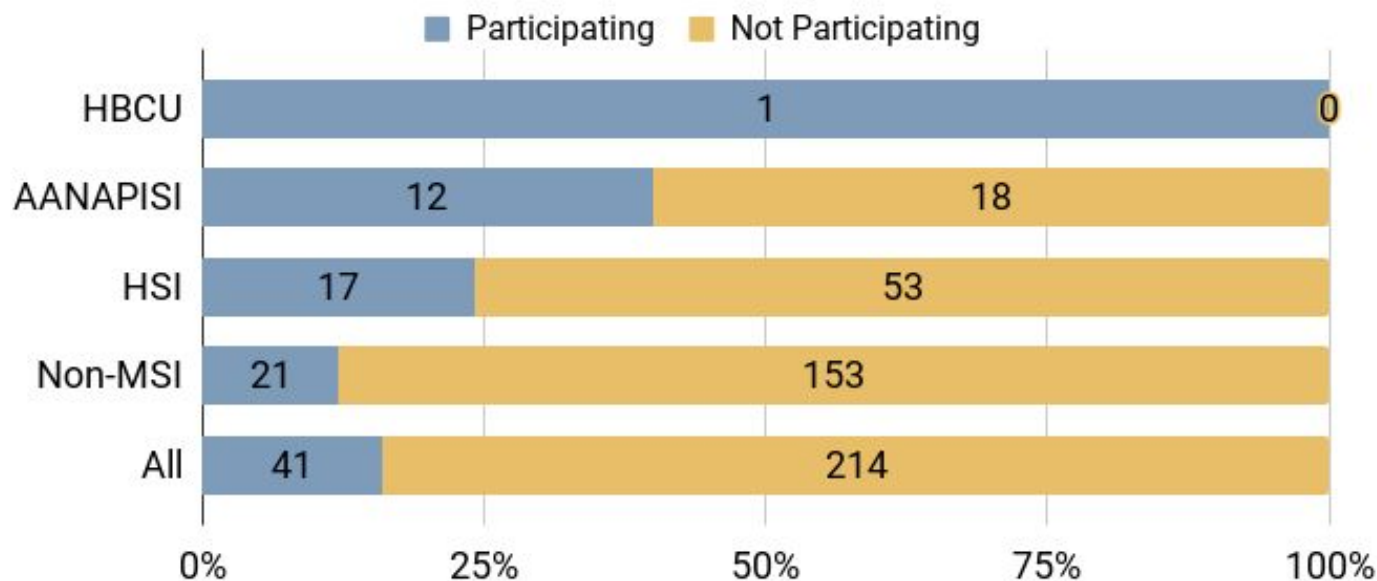


Participation



Participation

Number and proportion of SCEL academic institutions participating in SCEL shared print



SCELC Program Assessment Early Findings

01 | Current Participants

02 | Non Participants

03 | Future Directions



SCELC & EAST:

Expanding Diversity and Inclusivity in the Collective Collection of Shared Print



CRITICAL QUESTIONS

Do MSIs need shared print programs or do shared print programs need MSIs (or both)?

Will greater institutional diversity in shared print participation diversify shared print collections?

What is the value of and barriers to MSI participation in shared print programs?



Kirsten Leonard

Executive Director, Private Academic Library Network
of Indiana (PALNI)



Bibliographic Data Management Options Planning Grant

Partnership/Rosemont Annual Meeting
Feb 2022

Kirsten Leonard, Executive Director

Private Academic Library Network of Indiana (PALNI)

\$225,000 Provided by ...



**Indiana
State Library**

Through the American Rescue Plan Act

Planning Project Overview

- This project will explore existing needs and options for ***low-cost, openly available, bibliographic data management and creation tools***
- Investigate the rights and limitations of metadata sharing, and inventory openly available metadata sources
- Gather specifications and feasibility of existing infrastructures to share bibliographic data
- Develop principles for the community governance and business model to sustain an equitable, sustainable, and open option



WHAT?

Project Deliverables

- Develop a broad group of stakeholders in Indiana and from other library groups that will be able to support the work going forward
- Produce a report on this community's needs for a low-cost bibliographic management entity
- Report on currently available bibliographic utilities, data sources, costs, use permissions, and extensibility
- Develop a defined minimum viable product feature set, development plan and illustrative design wireframes, cost estimates, and governance and business structures, and/or possible integration into other open initiatives and infrastructure

Why is PALNI pursuing this?

https://www.libraryjournal.com/story/Uncertain-Times-Budgets-and-Funding-2022

eGMS Reach: Home Anthem Hyrax Interest Group notch8 / palni-palci... PALNI Data Portal Commons Archive Find email address... Hyku Documents

Social Emotional Librarianship
March 29 | April 5 | April 12

SUBSCRIBE

LJ LIBRARY JOURNAL

News Reviews+ Technology Programs+ Design People Public Libraries

Uncertain Times: Budgets and Funding 2022

by Lisa Peet
Feb 01, 2022 | Filed in [News](#)

[f](#) [t](#) [e](#) [p](#) [o](#)

After libraries weathered hardships during the first year of the COVID pandemic in 2020—including sudden industry-wide building shutdowns; the consequent shift to remote and digital offerings; funding cuts at state, county, and municipal levels; and the call to meet a new array of community needs—2021 public library budgets reflected the general relief offered by a nationwide vaccination and booster program and several robust federal assistance programs. But for all the help, most top-down funding is not ongoing, and as the year ended, the spread of the Omicron variant triggered new levels of uncertainty about if and when life will return to normal.

LJ's 2022 Budgets and Funding survey, sponsored by Penguin Random House, Baker & Taylor, and The Library Corporation (TLC), received responses from 214 public libraries across the United States—the fewest in the survey's history. Despite difficult times, it showed unexpectedly healthy increases across the board. From 2020 to 2021, total operating budgets rose by 2


NEWS Tuition, fees continues to rise as pandemic inflation woes hit colleges

SHARE & SAVE [f](#) [t](#) [e](#) [p](#) [o](#)

EDUCATION

Tuition, fees continues to rise as pandemic inflation woes hit colleges

Inflation is pushing up college tuition and fees while staff shortages are forcing wages and benefits higher. The squeeze comes at the worst possible time for higher education.



The illustration depicts two stylized figures running upwards. The figure on the left is wearing a brown suit and a green scarf, carrying a briefcase. The figure on the right is wearing a green dress and a red scarf, also carrying a briefcase. They are running up a large, red, checkered arrow that points diagonally upwards to the right. In the background, there are several white, checkered arrows pointing in various directions, some upwards and some downwards, creating a sense of movement and direction.



AMBS
 Anderson
 Bethel
 Butler
 CTS
 Concordia
 DePauw
 Earlham
 Franklin
 Goshen
 Grace
 Hanover
 Huntington
 Manchester
 Marian
 Oakland City
 Saint Francis
 Saint Mary's
 Saint Meinrad
 Taylor
 Trine
 U of Indy
 Wabash



23 Libraries



The Project is Future Facing

- Not envisioned as a replacement of the existing suite of OCLC bibliographic services
- Affordability/access/agility are the primary drivers
- Examining:
 - new technology structures for options
 - aggregate or distributed structures
 - models for agency and ownership

Now What? Agency, Flexibility and Cost-Containment

- Technical and use permissions that provide flexibility to solve new and evolving information needs
- Flexibility to support new ways of sharing staff and information and improve library influence in the institutional mission
- Structures that support collaborations and pathways to jointly reduce costs and provide some granularity in service/cost choice
- Principles: Examine the viability of open and/or free solutions that meet library needs, with revenue-generating support services or other revenue streams, based on cost recovery models and high levels of transparency and accountability

Thank you!



kleonard@palni.edu



317-752-6831



www.palni.edu



facebook.com/PALNIConsortium



[@PALNILibraries](#), [@KirstenLeonard](#)



Ian Bogus

Executive Director Research Collections and
Preservation Consortium (ReCAP)



Open Cultures Open Doors



Rosemont/Partnership Joint Meeting 2022

What



Books are for use.

Every reader his or her book.

Every book its reader.

Save the time of the reader.

A library is a growing organism.



Now
What



https://commons.wikimedia.org/wiki/File:SR_Ranganathan_1992_stamp_of_India.jpg

Books are for use.

Our job is to deliver
information,
not to check cards



<https://www.flickr.com/photos/manchesterlibrary/7944820484>

Every reader his or her book.

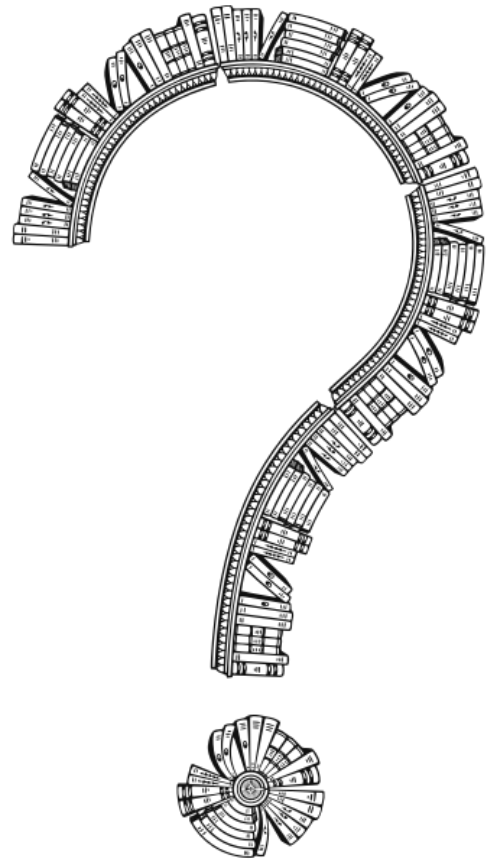
Resources are not more relevant just because we own them.



<https://www.flickr.com/photos/duncan/20869939842/>

Every book its reader.

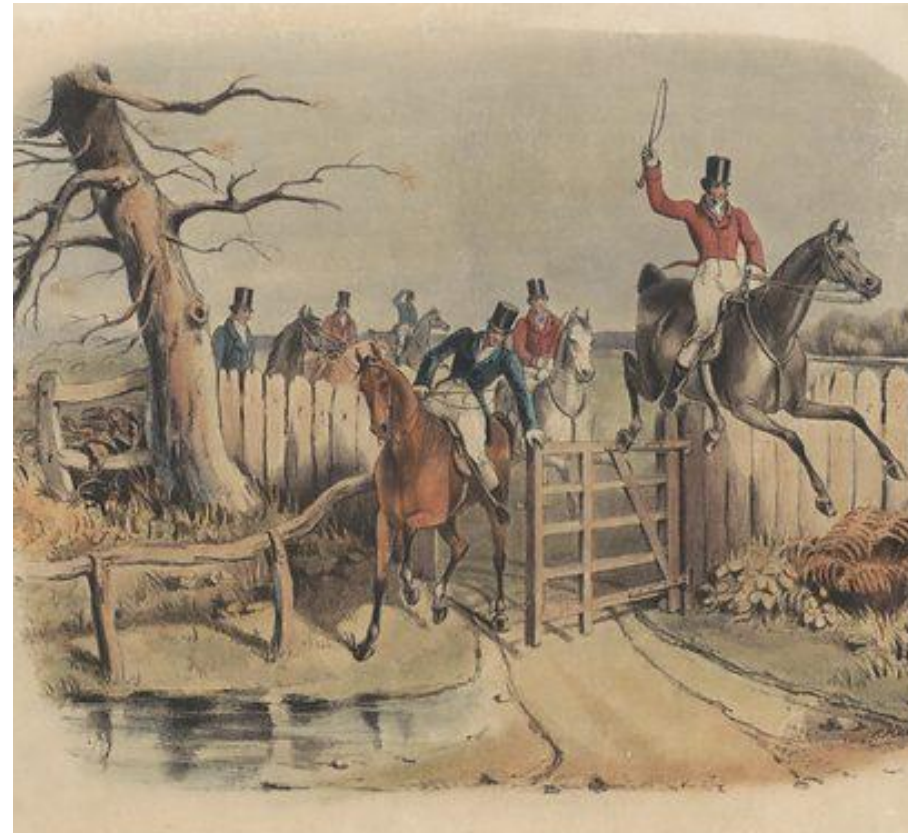
Users often do not know
what they need



<https://freessvg.org/1548106900>

Save the time of the reader.

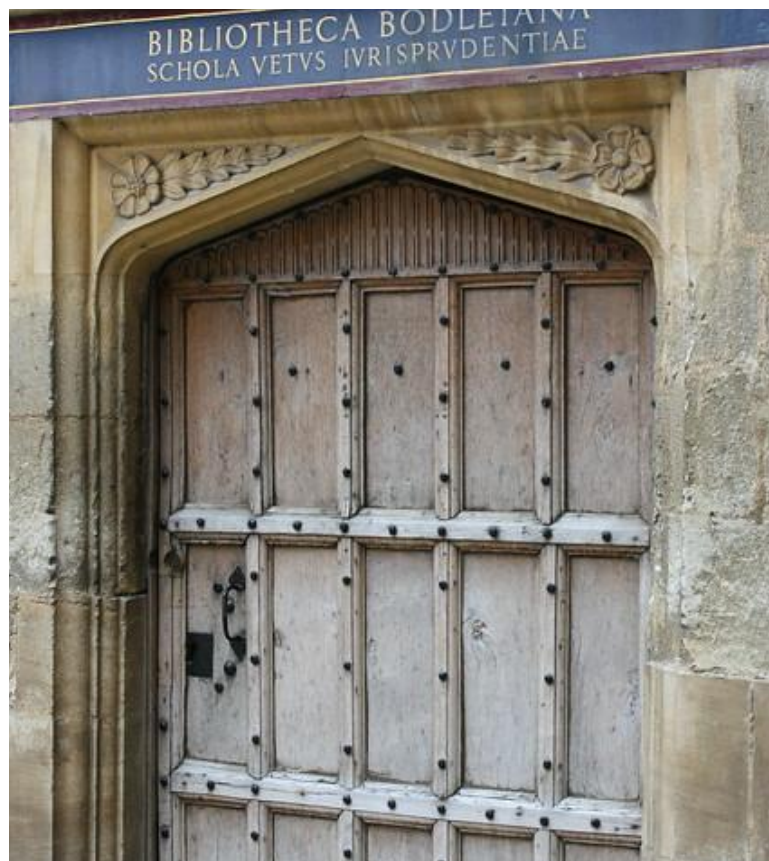
Multiple systems and expectations are hurdles



<https://www.lookandlearn.com/history-images/YA0052554/Fox-Hunting-set-of-six-Melton-Mowbray-No-5-Taking-the-Gate-at-the-Hinge-Post-while-Snob-walks-thro>

A library is a growing organism.

Breaking down how we
think about collections
opens many doors.



https://live.staticflickr.com/3680/9884214646_391cc68b30_z.jpg

Panel Q & A

Moderated by **Greg Eow**, President, Center
for Research Libraries (CRL) & Rosemont
Executive Committee Member



Teri Gallaway, Executive Director, Statewide California Electronic Library Consortium
(SCELC)



Kirsten Leonard, Executive Director, Private Academic Library Network of Indiana
(PALNI)



Ian Bogus, Executive Director, Research Collections and Preservation Consortium
(ReCAP)



During the break we'd like to thank those who have donated their time and expertise to the Partnership and the Rosemont Alliance this year.



Breakout Sessions

Controlled Digital Lending

Host: **Charlie Barlow**, Executive Director, Boston Library Consortium

Reporter: Linda Wobbe, eJournal Relations Manager, Statewide California Electronic Library Consortium (SCELC)

Platform for Open Discovery

Host: **Tom Cramer**, Associate University Librarian, Library Technology, Stanford University

Reporter: Oya Rieger, Senior Strategist, Ithaka S+R

Linked Data

Host: **Nancy Lorimer**, Head, Metadata Department, Stanford Libraries, Stanford University

Reporter: Heather Weltin, Content & Data Management Lead & Shared Print Program Officer, HathiTrust

Collaborative Collections Lifecycle Platform

Host: **Boaz Nadav-Manes**, University Librarian, Lehigh University

Reporter: Matt Rosendahl, Library Director, University of Minnesota

Rosemont/Partnership future relationship

Hosted by the **Chairs of the Rosemont Alliance and Partnership Executive and Ops Committees**

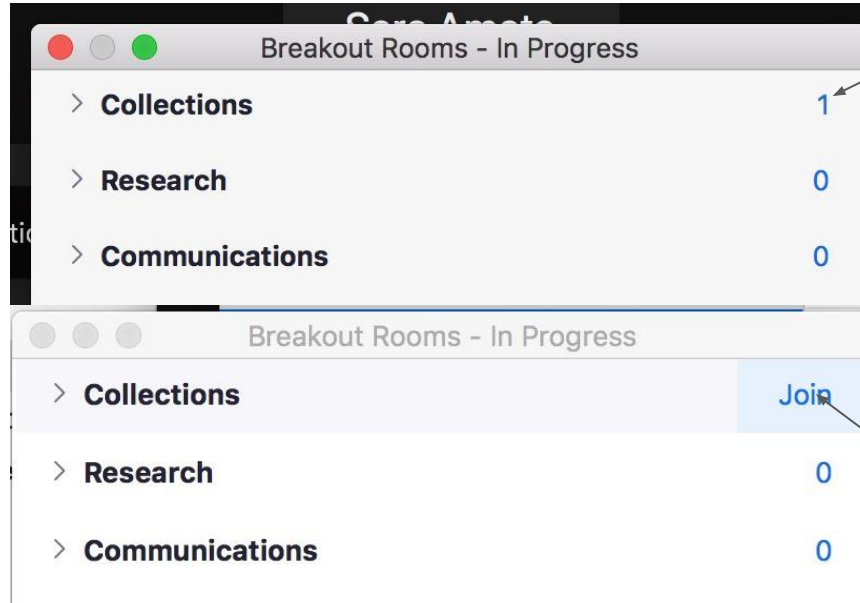
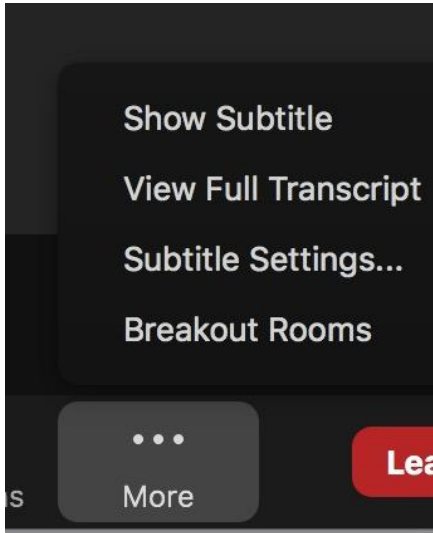
Reporter: Susan Stearns, Eastern Academic Scholars' Trust (EAST)

Open Topics

Host & Reporter: **Aaron Krebeck**, Director of Library & User Services,
Washington Research Library Consortium



Housekeeping - Joining a Breakout Room, Changing Rooms



Hover
over the
number to
get the
[Join]
button

Controlled Digital Lending:

http://bit.ly/Breakout_CDLP

Platform for Open Data:

http://bit.ly/Breakout_POD

Linked Data :

http://bit.ly/Breakout_LD

Collaborative Collections Lifecycle Platform:

http://bit.ly/Breakout_CCLP

Partnership/Rosemont Alliance Future Relationship:

<http://bit.ly/PartnershipAndRosemont>

Open Topics:

<http://bit.ly/OpenTopics>



Reporting Back From Breakout Sessions / Q&A

Controlled Digital Lending

Host: Charlie Barlow, Executive Director, Boston Library Consortium

Reporter: **Linda Wobbe**, Journal Relations Manager, Statewide California Electronic Library Consortium (SCELC)

Platform for Open Discovery

Host: Tom Cramer, Associate University Librarian, Library Technology, Stanford University

Reporter: **Oya Rieger**, Senior Strategist, Ithaka S+R

Linked Data

Host: Nancy Lorimer, Head, Metadata Department, Stanford Libraries, Stanford University

Reporter: **Heather Weltn**, Content & Data Management Lead & Shared Print Program Officer, HathiTrust

Collaborative Collections Lifecycle Platform

Host: Boaz Nadav-Manes, University Librarian, Lehigh University

Reporter: **Matt Rosendahl**, Library Director, University of Minnesota

Rosemont/Partnership future relationship

Hosted by the Chairs of the Rosemont Alliance and Partnership Executive and Ops Committees

Reporter: **Susan Stearns**, Eastern Academic Scholars' Trust (EAST)

Open Topics

Host & Reporter: **Aaron Krebeck**, Director of Library & User Services,
Washington Research Library Consortium



Wrap Up



PARTNERSHIP FOR SHARED BOOK COLLECTIONS

<https://sharedprint.org>

Info@sharedprint.org



ROSEMONT

SHARED PRINT ALLIANCE

<https://rosemontsharedprintalliance.org>

Rosemont@wrlc.org

